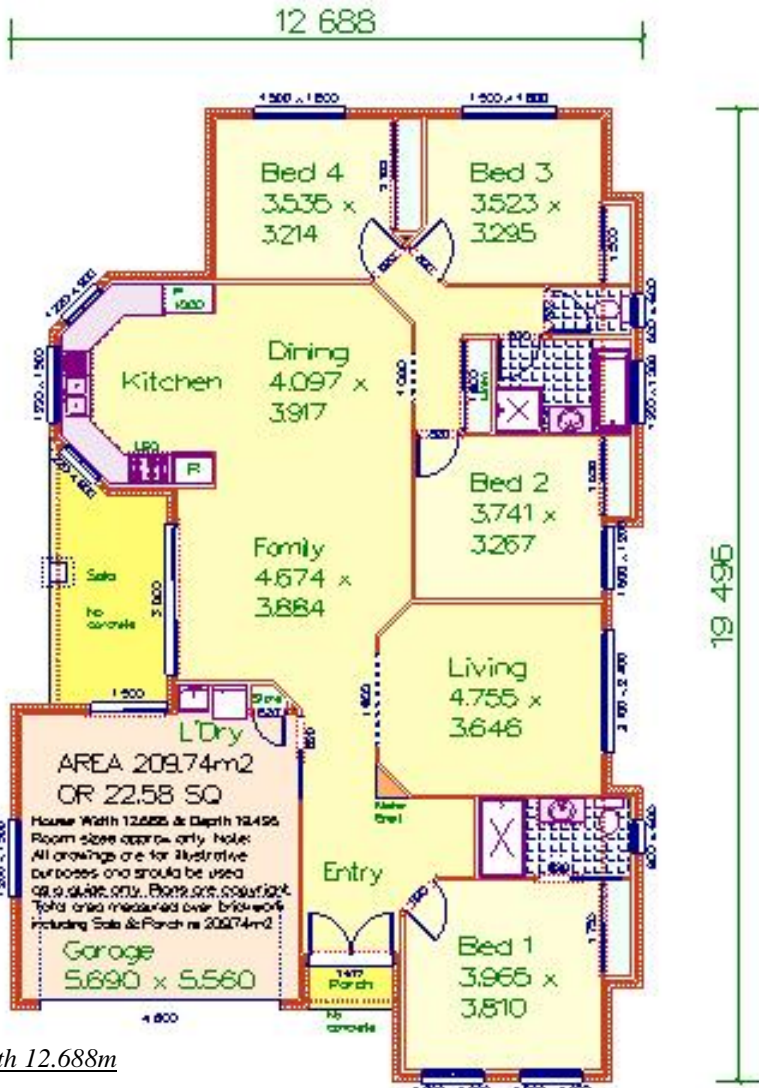




Artist Impression Front



THE WATTLEBANK 210

Area 209.74m² or 22.58 Squares

Overall depth 19.496m x overall width 12.688m

(Area measured over external walls including garage and external areas)

4 Bedrooms ~ Dining Room ~ Living Room ~ Family Room ~ Ensuite ~ Linen Cupboard ~ Broom Cupboard ~ Built in Robes ~ Double Lock Up Garage with Laundry & Store Cupboard ~ Pantry ~ Niche Shelf to Entry ~ Formal Entry ~ Rear Sala ~ Front Porch

This design is the exclusive property of

Pacific Designer Homes Pty Ltd

The Best Move You'll Ever Make!

ACN 055 718 048

In accordance with our continuing product development we reserve the right to alter designs, specifications and price without prior notice. Brochures are indicative and to be used as a guide only showing suggested landscaping, etc. Room sizes are approximate only. Refer to inclusions list and price list. Plans are strictly the copyright of Pacific Designer Homes Pty Ltd