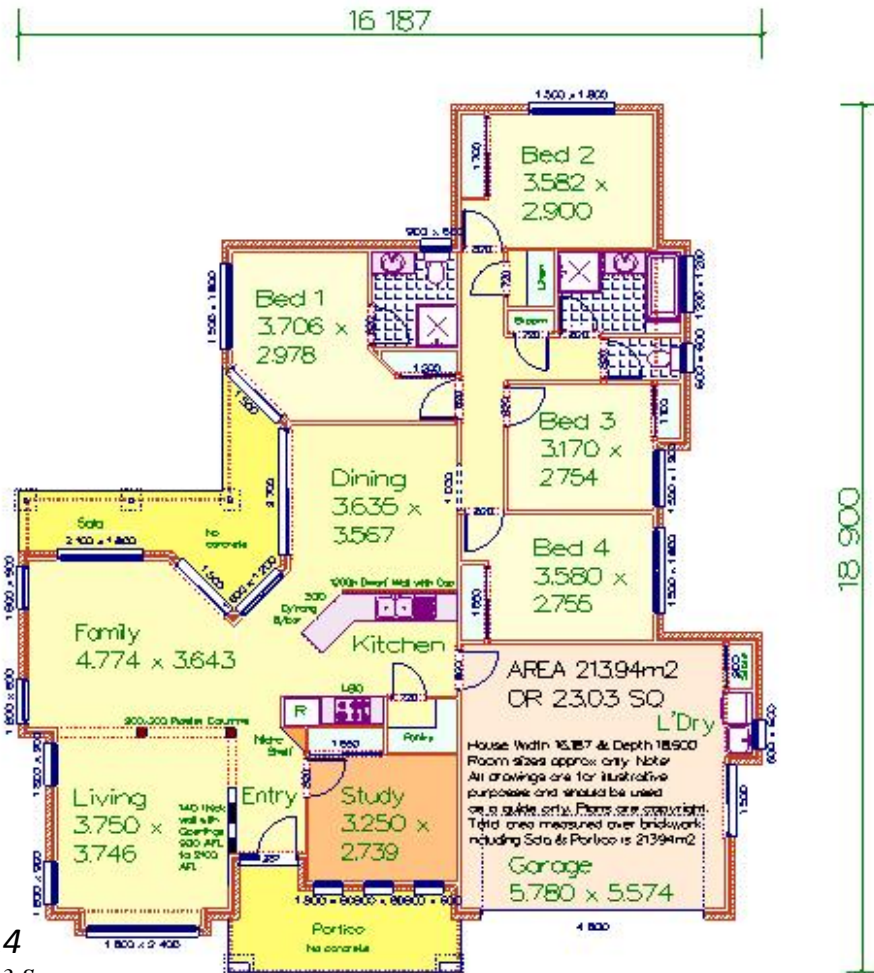




Artist Impression Front



THE TERRACE 214

Area 213.94m² or 23.03 Squares

Overall depth 18.900m x overall width 16.187m

(Area measured over external walls including garage and external areas)

4 Bedrooms ~ Bed 5 / Study ~ Dining Room ~ Living Room ~ Family Room ~ Ensuite ~ Walk in Linen Cupboard ~ Broom Cupboard ~ Built in Robes ~ Double Lock Up Garage with Laundry & Store Cupboard ~ Walk in Pantry ~ Niche Shelf in Entry ~ 200x200 Plaster Columns with Plaster Feature Openings near Entry ~ Formal Entry ~ Rear Sala ~ Front Portico

This design is the exclusive property of

Pacific Designer Homes Pty Ltd

The Best Move You'll Ever Make!

ACN 055 718 048

In accordance with our continuing product development we reserve the right to alter designs, specifications and price without prior notice. Brochures are indicative and to be used as a guide only showing suggested landscaping, etc. Room sizes are approximate only. Refer to inclusions list and price list. Plans are strictly the copyright of Pacific Designer Homes Pty Ltd