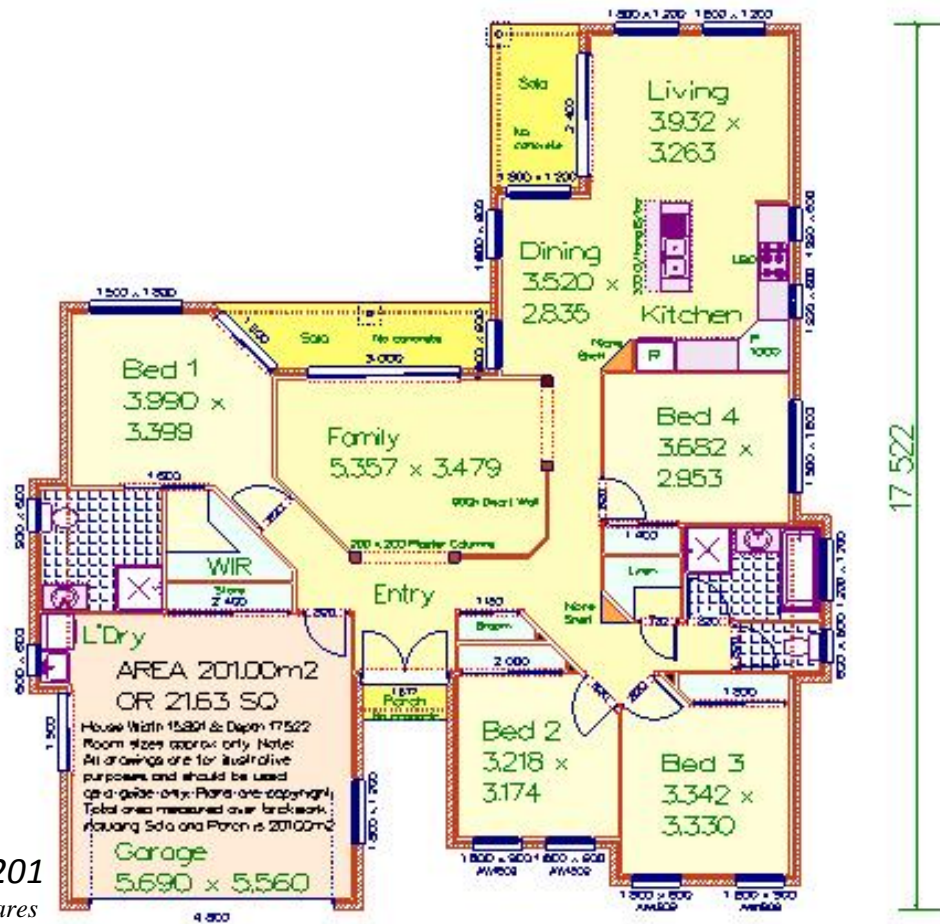
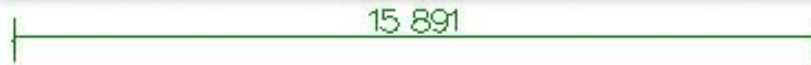




Artist Impression Front



**THE TANGALOOMA 201**

Area 201.00m<sup>2</sup> or 21.63 Squares

Overall depth 17.522m x overall width 15.891m

(Area measured over external walls including garage and external areas)

4 Bedrooms ~ Dining Room ~ Living Room ~ Family Room ~ Ensuite ~ Walk in Robe ~ Walk in Linen Cupboard ~ Built in Robes ~ Double Lock Up Garage with Laundry & Store Cupboard ~ Pantry ~ Niche Shelves ~ 200x200 Plaster Columns with Dwarf Wall to Family ~ Formal Entry ~ Rear Sala ~ Front Porch

This design is the exclusive property of

**Pacific Designer Homes Pty Ltd**

*The Best Move You'll Ever Make!*

ACN 055 718 048

In accordance with our continuing product development we reserve the right to alter designs, specifications and price without prior notice. Brochures are indicative and to be used as a guide only showing suggested landscaping, etc. Room sizes are approximate only. Refer to inclusions list and price list. Plans are strictly the copyright of Pacific Designer Homes Pty Ltd