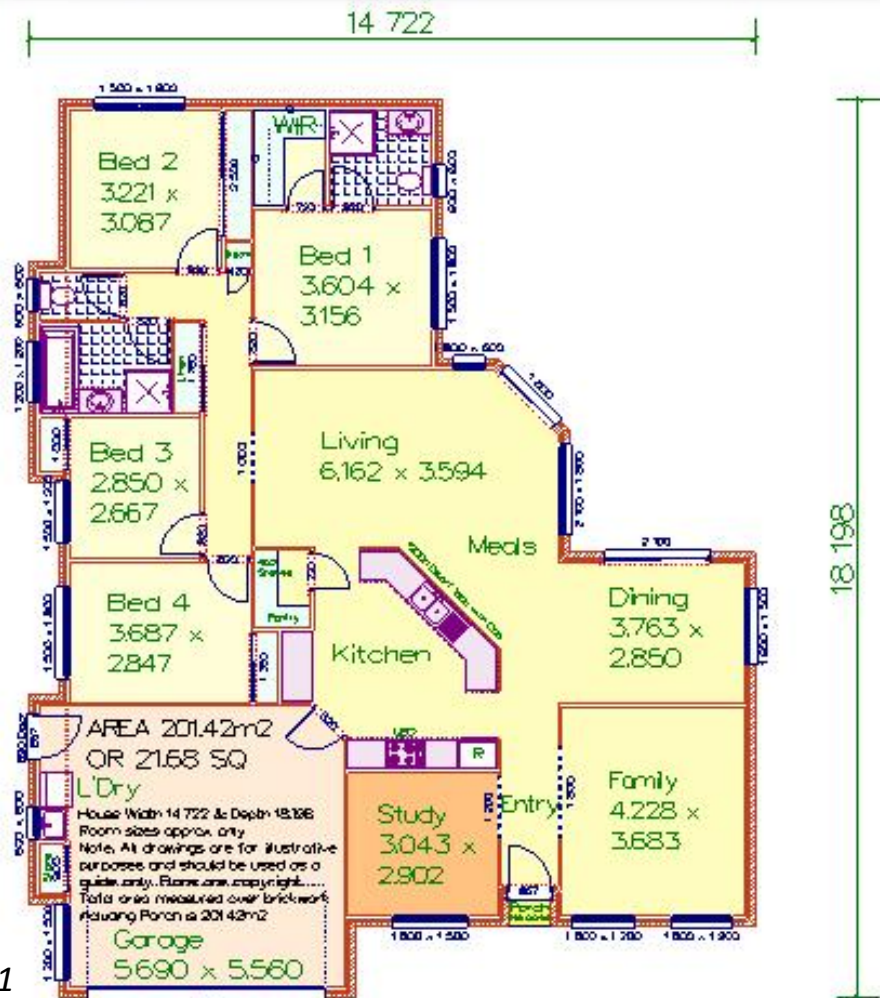




Artist Impression Front



THE PANORAMA 201

Area 201.42m² or 21.68 Squares

Overall depth 18.198m x overall width 14.722m

(Area measured over external walls including garage and external areas)

4 Bedrooms ~ Study ~ Dining Room ~ Meals Room ~ Living Room ~ Family Room ~ Ensuite ~ Walk in Robe ~ Linen Cupboard ~ Broom Cupboard ~ Built in Robes ~ Double Lock Up Garage with Laundry & Store Cupboard ~ Walk in Pantry ~ Formal Entry ~ Front Porch

This design is the exclusive property of

Pacific Designer Homes Pty Ltd

The Best Move You'll Ever Make!

ACN 055 718 048

In accordance with our continuing product development we reserve the right to alter designs, specifications and price without prior notice. Brochures are indicative and to be used as a guide only showing suggested landscaping, etc. Room sizes are approximate only. Refer to inclusions list and price list. Plans are strictly the copyright of Pacific Designer Homes Pty Ltd