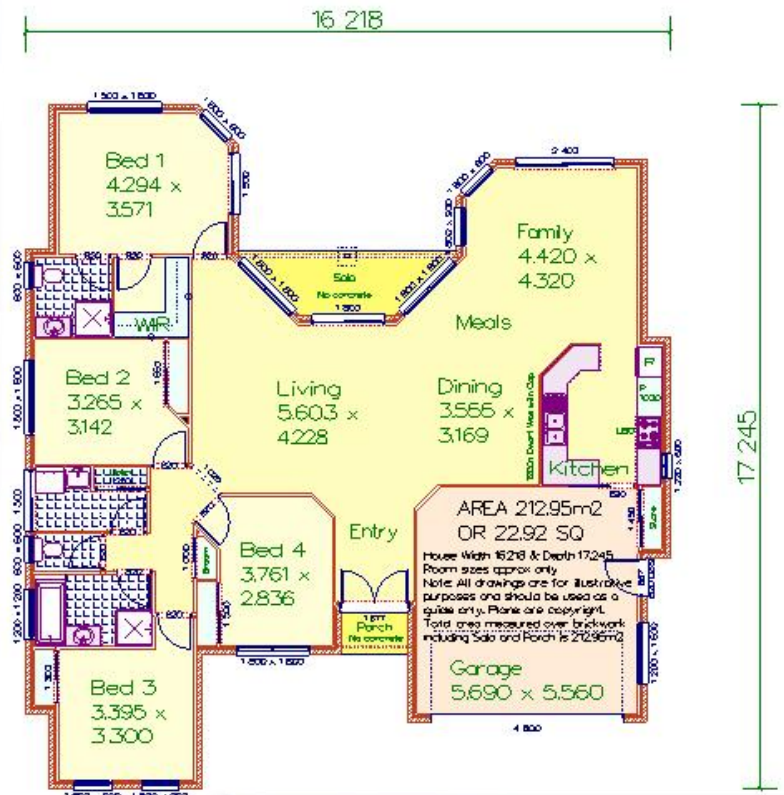




Photographic Impression Front



Photograph 1



Photograph 2

THE CAYMAN RESORT 213

Area 212.95m² or 22.92 Squares

Overall depth 17.245m x overall width 16.218m

(Area measured over external walls including garage and external areas)

4 Bedrooms ~ Dining Room ~ Meals Room ~ Living Room ~ Family Room ~ Ensuite ~ Walk in Robe ~ Linen Cupboard ~ Broom Cupboard ~ Built in Robes ~ Double Lock Up Garage with Store Cupboard ~ Pantry ~ Formal Entry ~ Rear Sala ~ Front Porch

PHOTOGRAPH 1, PHOTOGRAPH 2 & PHOTOGRAPHIC IMPRESSION FRONT NOTE: Following items are excluded: raised Portico & raised ceiling to Entry, glass Hi lite over front doors, antennas, tinted windows, flyscreens, feature brick piers to front, brick banding protrusion, external painted wall treatment, gas bottle/s, external drainage, round louvres to front roof lines, dry verge Barge to Gables, rear Sala timber post (roof cantilevered out), double height bricks, landscaping/paving and feature gables to front and rear

This design is the exclusive property of

Pacific Designer Homes Pty Ltd

The Best Move You'll Ever Make!

ACN 055 718 048

In accordance with our continuing product development we reserve the right to alter designs, specifications and price without prior notice. Brochures are indicative and to be used as a guide only showing suggested landscaping, etc. Room sizes are approximate only. Refer to inclusions list and price list. Plans are strictly the copyright of Pacific Designer Homes Pty Ltd