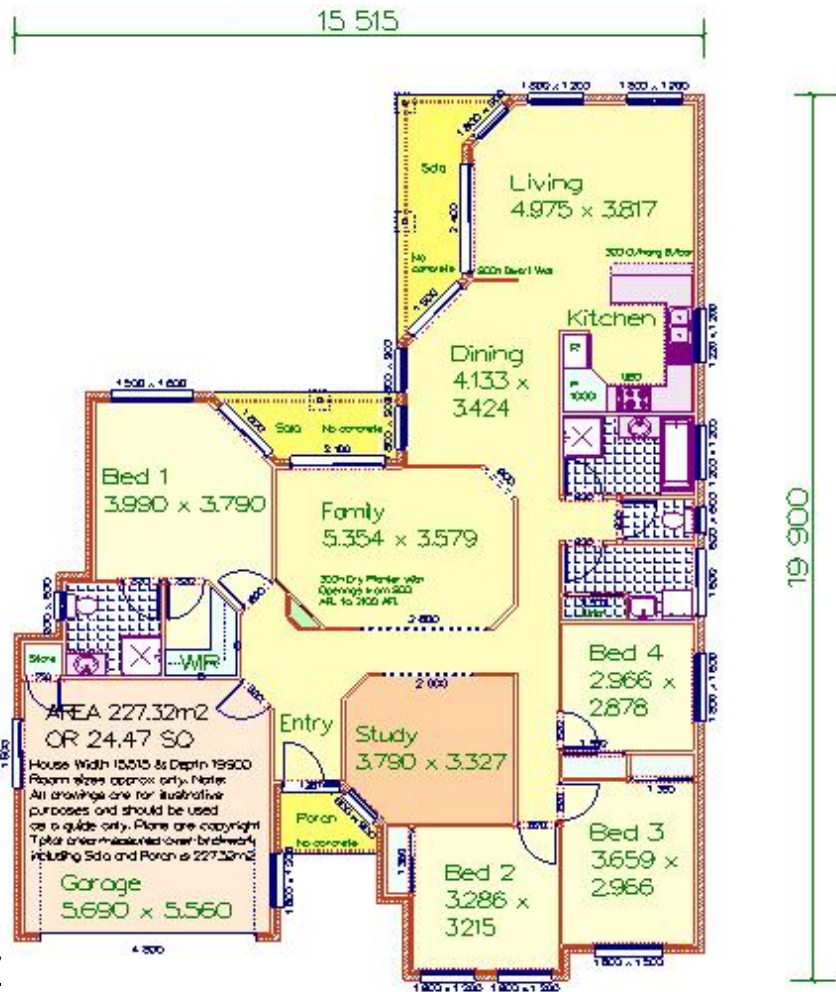




Artist Impression Front



### **THE BYRON RESORT 227**

Area 227.32m<sup>2</sup> or 24.47 Squares

Overall depth 19.900m x overall width 15.515m

(Area measured over external walls including garage and external areas)

4 Bedrooms ~ Study ~ Dining Room ~ Living Room ~ Family Room ~ Ensuite ~ Walk in Robe ~ Linen Cupboard ~ Built in Robes ~ Double Lock Up Garage with Store Cupboard ~ Pantry ~ Internal Dry Planter to Entry with Plaster Feature Openings ~ Dwarf Wall to Dining ~ Formal Entry ~ Rear Sala ~ Front Porch

This design is the exclusive property of

**Pacific Designer Homes Pty Ltd**

*The Best Move You'll Ever Make!*

ACN 055 718 048

In accordance with our continuing product development we reserve the right to alter designs, specifications and price without prior notice. Brochures are indicative and to be used as a guide only showing suggested landscaping, etc. Room sizes are approximate only. Refer to inclusions list and price list. Plans are strictly the copyright of Pacific Designer Homes Pty Ltd